



Evolve

A rugged smart handheld device built for enterprise & mission critical environments.



Evolve smart handheld device

With a rapidly expanding choice of data networks, you now have more ways to connect with your organization than ever before. But the communications landscape evolves quickly, and your needs may be constantly changing. Keeping your fleet of user devices and in-field teams up to date and ready for the future is a challenge.

For business and mission critical environments, the Evolve smart handheld device combines the intuitive user experience and open platform architecture of an Android device with the

ruggedness and reliability expected of a critical communications push-to-talk device. The rugged Evolve device has the familiar user controls of a two-way radio: dedicated emergency and push-to-talk button, and easy talkgroup selections. Evolve is easy to manage through your organization's Mobile Device Management (MDM) system and firmware updates are delivered over-the-air. Evolve also enables seamless communications across different locations and networks via our WAVE PTX™ solution.



Key features

Rugged and resilient

- Dustproof and submersible IP68 (2m, 2h)
- MIL-STD-810 (11 categories exceeded)
- Liquid resistant glove-operable touch screen
- Long life and easily swappable battery
- Intrinsically safe version available¹

Hear and be heard

- Loud and clear audio
- Noise Suppression
- Echo Cancellation

Intuitive user experience

- Simple interface
- 5" touch screen
- Dedicated physical buttons
- Front and rear facing cameras
- Full multimedia capabilities

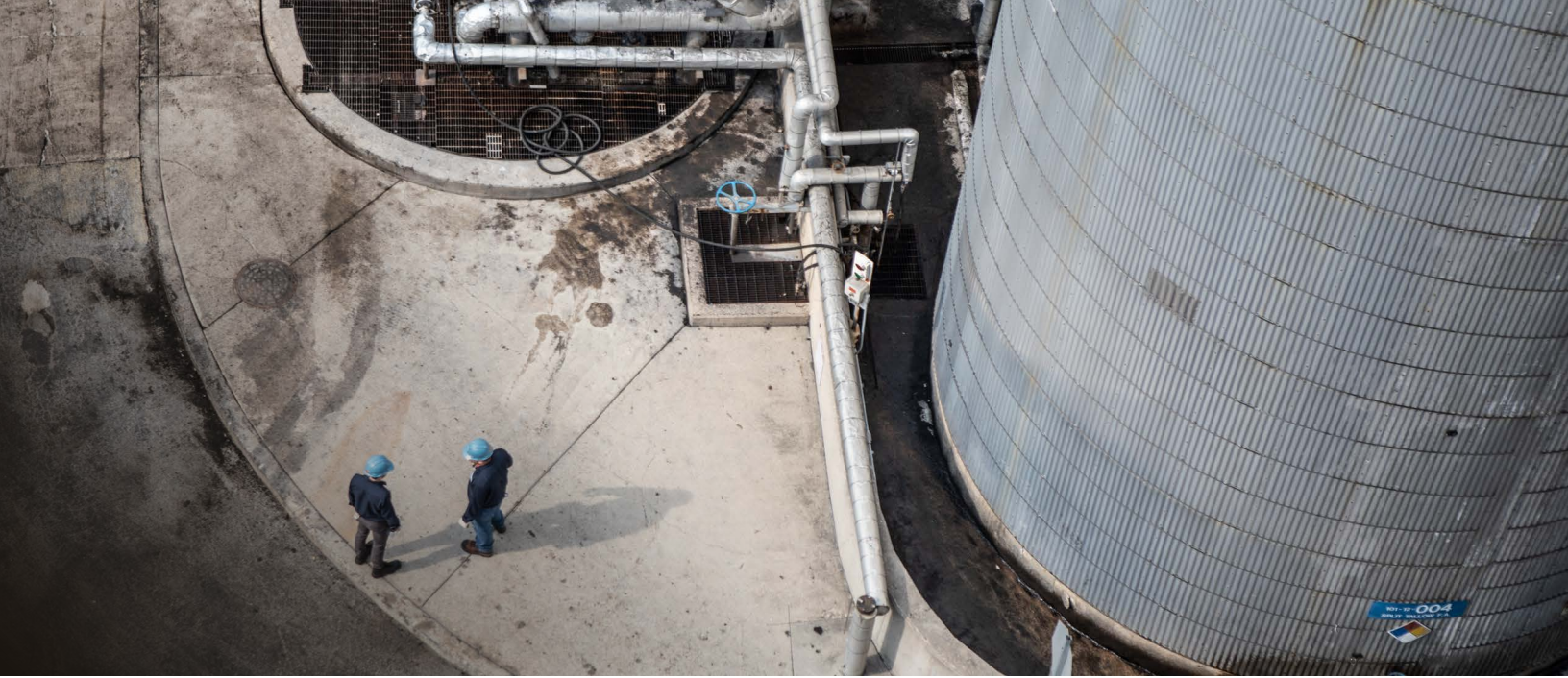
Seamless connectivity

- 3G, 4G, Wi-Fi and CBRS²
- Dual SIM capability
- Ideal companion for WAVE PTX
- Android Platform
- Android Enterprise Enabled
- Open app ecosystem

Easy to manage

- Centralized device management via MDM
- Over-the-air device updates
- Services





Rugged and resilient

Evolve is a ruggedized device for those hard at work. Built to withstand tough working conditions and to last multiple shifts, you can get the job done safely anywhere you do business.

Made for the mission ahead

The tough Corning® Gorilla® Glass touchscreen on Evolve is liquid-resistant and glove-operable. In addition to the standard Android menu and navigation buttons, Evolve has physical programmable buttons. It can be used in tough, unforgiving environments – Evolve meets MIL-STD-810 for drop and shock testing and is IP68 rated for protection against dust and water, so will keep working even after being submerged in water for up to two hours at a depth of two meters.

Intrinsically safe Evolve model

For those who work in conditions where there may be explosive gas or dust we offer the Evolve-i intrinsically safe model ¹.

Power for multiple shifts

Evolve is equipped with high-capacity, field-swappable batteries to ensure your device can stay in the field for as long as your team needs. Built for multi-shift use, Evolve has been designed to enable a long run time and can be handed over from shift-to-shift without charging.



Hear and be heard

Hearing and being heard clearly even in noisy environments are essential qualities for voice communication. That's why we built Evolve with a powerful 2 Watt loudspeaker, where even at 30 cm away the outgoing audio can be measured at 97 phon of loudness, enabling your people to hear even over loud noise.

And it's not just the loudness of audio that matters, clarity matters too. As Evolve is a smart handheld broadband device, it can take advantage of wideband connectivity to deliver clear, High-Definition (HD), high-fidelity audio. Hearing is one thing, but it's equally important for two-way voice communications, that your voice can be heard by others. Evolve includes three microphones which are used for noise suppression and echo cancellation so that your side of the conversation can be transmitted clearly. We also offer a range of audio accessories, so that you can select the most appropriate earpiece or remote microphone to match the different needs of your users.

Intuitive user experience

Evolve helps provide your team with immediate access to the data and intelligence flowing in and out of your organization, and helps them make informed decisions on the fly. In addition, Bluetooth support provides additional future-proofing for connectivity to the next generation of third-party devices and accessories.

Simple interface

Evolve combines the touchscreen interface of a smartphone with the physical buttons and controls of a two-way radio to give your team quick, easy, instant communications that let them keep their eyes on their work. This simple interface means Evolve delivers the intuitive voice communications your team relies on to work in any environment.

Full multimedia capabilities

Evolve's 5" touch screen is your users' window into the world of data-empowered insights and applications – allowing them to view videos, images, schematics, and diagrams from anywhere. Front and rear facing cameras allow you to capture and send images and video, and video chat.



Seamless connectivity

Equipped with future-proofed data and voice connectivity, and access to an expanding technology and software ecosystem, Evolve is ready to grow alongside your organization.

Broadband data

As your organization's data needs and network capabilities expand, Evolve is ready for your transition to next-generation networks as it has support for dual SIM cards and is compatible with 3G, 4G, Wi-Fi and CBRS². Users can also create a local Wi-Fi hotspot with Evolve for Wi-Fi enabled devices, such as a tablet. This enables devices tethered to Evolve's Wi-Fi Access Point to send and receive information over LTE.

Intuitive PTT voice communication

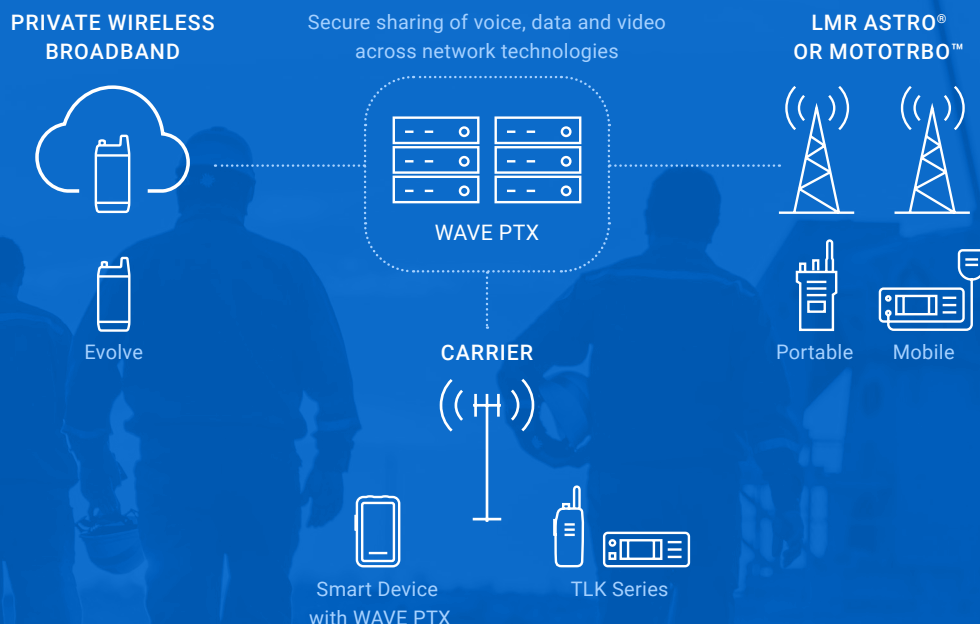
Give your team quick, easy, instant communications that lets them keep their eyes on their work. With its dedicated push-to-talk button, Evolve delivers the intuitive voice communications your team relies on. With WAVE PTX, our broadband PTT service, Evolve can provide seamless push-to-talk communications between users across different devices, networks and locations.

Motorola Solutions Safety & Security Ecosystem

Connect into safety and security with Motorola Solutions' growing technology and software solution set, including video security and analytics, location services, and productivity and incident management software. Thanks to its processing power, large display and rich data connectivity, your Evolve device will have you poised to deploy advanced technology as your needs grow, while its rugged design and outstanding voice capabilities ensure that you never compromise your most critical communications.

WAVE PTX

Connect your team with greater speed and efficiency using WAVE PTX, a push-to-talk service that has no boundaries. WAVE PTX is a subscription-based group communication service that instantly connects your team across different devices, networks, and locations.





Android platform

Evolve runs the Android operating system, providing a familiar user experience and allowing for a seamless transition for anyone who has used an Android smartphone or tablet.

Android enterprise enabled

Designed for speed, flexibility and scalability with open architecture, Evolve leverages the Android platform and open application ecosystem. Evolve is enabled with Android Enterprise functionality to ensure that it can integrate with the existing mobile device management systems of your organization.

Open app ecosystem

With its open app platform, your users can access any app in the Google Play Store, including G-suite apps such as Gmail and Google Maps, productivity apps such as Slack, Teams, and Dialpad, or even your own custom Android apps. A variety of mobile device management (MDM) platforms for Android give you full control over which apps get installed, helping you ensure maximum productivity and security.

Easy to manage

Reduce downtime and lower the cost of ownership with fleet management that keeps the power and control of your device fleet in your hands.

Easy device updates

Evolve firmware updates are made over-the-air over 3G, 4G, Wi-Fi and CBRS networks without taking your devices out of the field, saving the time and cost of recalling devices to your workshop for updates.

Comprehensive fleet control

Maintain control of fleet application access, behaviors, permissions, and securities with both custom and off-the-shelf APIs available through Android Enterprise, implemented and managed through the mobile device management solution of your choice.

Services

To maintain your Evolve smart handheld so that it continues to operate at optimal levels, optional service packages are available to provide extended and enhanced levels of protection, including accidental damage.



Accessories

Optimize the Evolve smart handheld device with a suite of available accessories. With batteries, chargers, earpieces and holsters, you can expand and customize the functionality of Evolve, so you have the options you need to get the job done.



Audio solutions



WM500 WIRELESS REMOTE SPEAKER MICROPHONE
Wireless RSM compatible with WAVE PTX.
PMMN4127



RM250 WIRED REMOTE SPEAKER MICROPHONE
Wired RSM compatible with WAVE PTX.
PMMN4125



EARPIECE WITH LOUD AUDIO TRANSLUCENT TUBE
1-wire surveillance kit with translucent eartube and in-line PTT/microphone. UL intrinsically safe certified.
PMLN8191



EP910W WIRELESS EARPIECE WITH PTT BUTTON
Volume up/down, PTT button and noise cancellation, Includes micro-USB cable for charging, earbud replacements available.
PMLN8123



WP300 WIRELESS BLUETOOTH CONTROL POD WITH PTT BUTTON
Bluetooth device for wireless connectivity to radio functions such as volume, push-to-talk and emergency buttons.
PMLN8298

Carry solutions



3" BELT CLIP
Meant to be used with PMLN6970.
PMLN7965



2.5" BELT CLIP
Meant to be used with PMLN6970.
NTN8266



PLASTIC CARRY HOLSTER WITH NO CLIP
PMLN6970

Battery solutions



STANDARD 2900MAH LI-ION BATTERY
BT000592A01



HIGH CAPACITY 5800MAH LI-ION BATTERY
BT000593A01



INTRINSIC SAFE (I.S.) HIGH CAPACITY 5800MAH LI-ION BATTERY
BT000594A01

Charging solutions



MULTI-UNIT CHARGER
PMPN4564



VEHICULAR POWER ADAPTER
PMPN4169



MICRO USB POWER ADAPTOR
PS000150A11 (US)

¹ Intrinsic safety certification (UL and CAN/CSA) only applies to the intrinsically safe model, when fitted with the Motorola Solutions UL approved battery.

² Use Evolve on private networks in the USA and Canada.

Learn more at motorolasolutions.com/evolve

